



TECHNOLOGY CENTER

FIU College of Business Administration

Accessing the CBA VPN

Revised 7/07

The Technology Center continues to work diligently on the server/security project in an effort to protect the CBA Network from vulnerabilities and attacks. As you know, all computers in the RB building are on the BA Domain and behind the College's firewall.

To ensure that you can continue to enjoy the benefits of accessing the servers in a secure fashion, even if you are not physically located in the College, the Technology Center implemented a **Virtual Private Network (VPN)** solution. **The purpose of the VPN is to provide a safe, encrypted method of connecting to the College's servers from anywhere on the internet and still be part of the CBA protected network. The CBA VPN will automatically map the U, S and W drive for you.** You will be able to access your drives as you do from the office, granting you access to your Lotus Organizer files from home or a remote location. Additionally, when connected to the CBA VPN, you no longer need to change your outgoing mail server settings in your email profile, whenever connecting through an external ISP.

Please note that you **SHOULD NOT** install the VPN on your office machines, **unless** you are using a laptop, as you are already securely connected to the CBA resources as part of the BA domain.

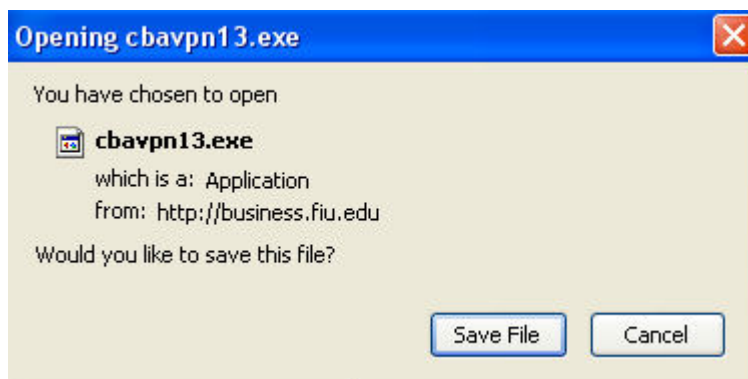
Install the CBA VPN ONLY on your LAPTOP or HOME COMPUTER.

The instructions below will guide you through the file download and installation process for the CBA VPN.

To download the latest version of the CBA VPN, simply type the following URL in your browser (and press "enter" on your keyboard):

- <http://business.fiu.edu/technology/files/cbavpn13.exe>

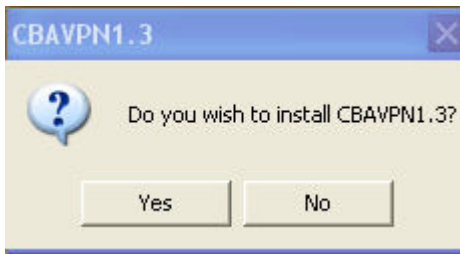
You will see the following window:



- Select Save File
 - Save the file to your desktop or alternate location of your choice

Next, locate the file **cbavpn13.exe** and double-click to run installation.

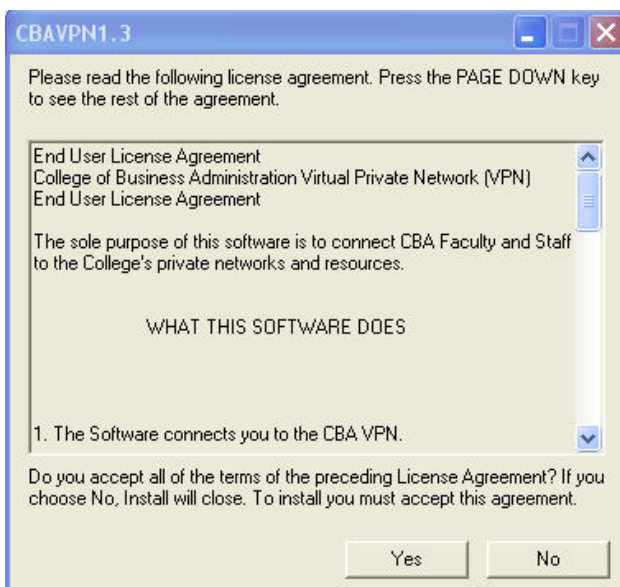
You will see the following screen:



- Click **Yes**

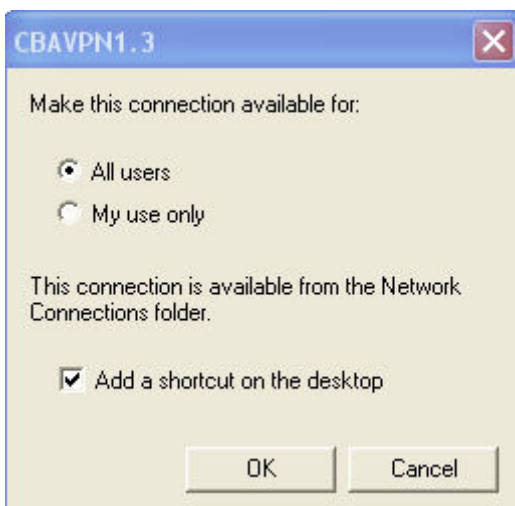
You will see the following screen

- Click **Yes** to accept the license agreement



You will see the following screen:

- Check the box that says **All Users**
- Check the box that says **Add a shortcut on the desktop**
- **Press OK**



You will see the following screen:

- For **Username**, enter: **ba\your pantherid**
- For **Password**, enter *the same one you use to log in to your machine*

Check the following boxes:

- **Save Password**
- **Connect Automatically**
- **Save these credentials for my use only**

User name:

Password:

Save password Connect automatically

Save these credentials for my use only
 Allow anyone to use these credentials

IMPORTANT: Type BA\ before username

Connection status
You must type your user name before you can connect to the service.

Connect Cancel Properties Help

- **CLICK CONNECT**

You are now connected to the CBA VPN